

2009 Assessment Theme Group Members:
Marie-Louise Bartelink, Bente Frisk, Andrew Hutchinson, Dragan Ilic, Sandra Kaplan, Kjersti Lonning, Richard Niederman, Nina Olsen, Jarmila Potomkova, Julie Tilson, Sandra Zwolsman

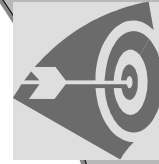
Sicily Statement on Assessment in Evidence Based Practice

Background



- ◉ EBP teachers need EBP assessment tools for evidence-based teaching
- ◉ 2006 Systematic Review shows high number of tools (104) but few are well developed
- ◉ A focused effort is required to develop and validate appropriate tools

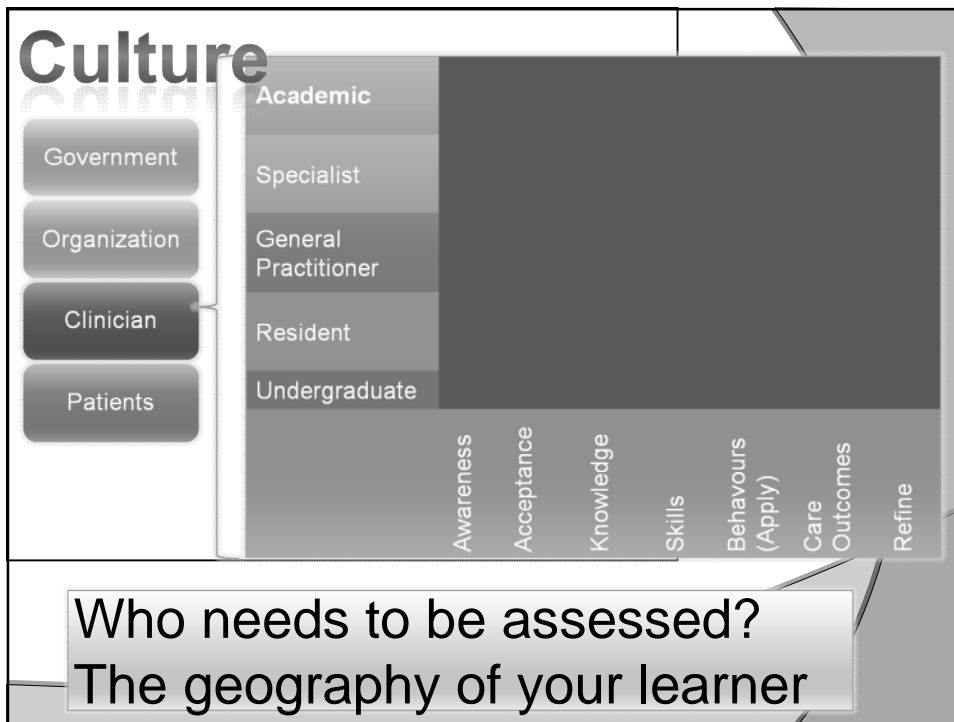
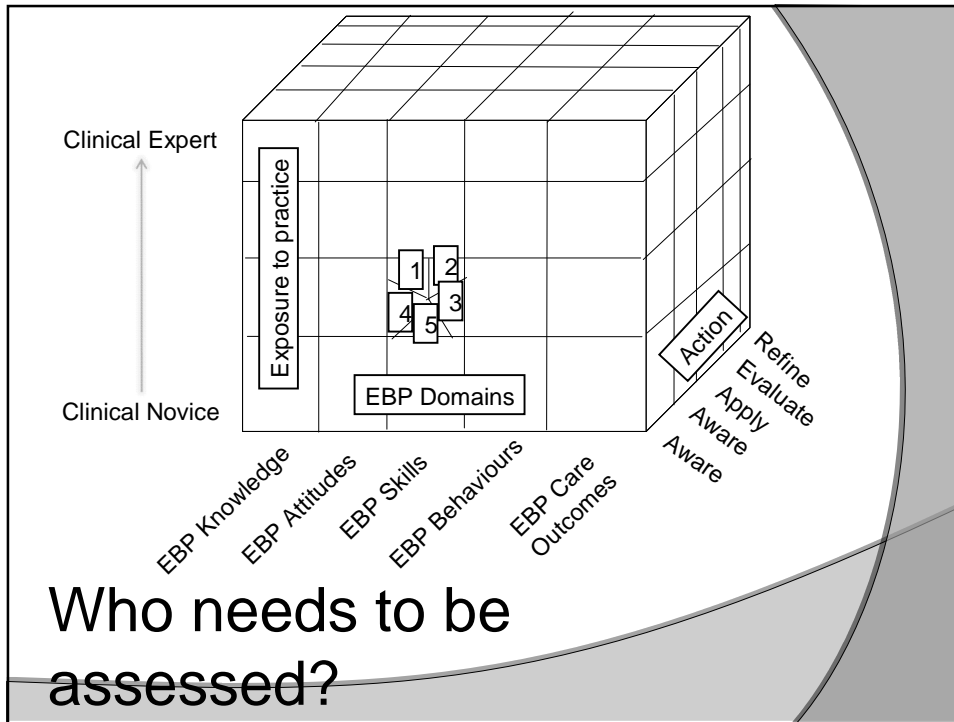
Statement Aim



- ◉ To facilitate the development of appropriate EBP assessment tools by
 - Describing the diversity of issues that should be considered for tool development
 - Outlining the primary domains for EBP learner assessment
 - Identifying gaps in EBP assessment resources
 - Making recommendations for development of EBP assessment tools

What do we need to assesses?

1. ASK					
2. ACQUIRE					
3. APPRAISE					
4. INTEGRATE/ APPLY					
5. REFLECT					



Narrative

- ◉ Discussion of needs for tool development

- Knowledge
- Attitudes
- Skills
- Behaviours
- Care Outcomes

Considerations:

- ❖ Theoretical Principles
- ❖ Learner Geography
- ❖ Psychometric Properties
- ❖ Strengths
- ❖ Gaps

What properties should tools have?

Sample Tools	Reliability	Validity	Ease of Administration	Freely Available

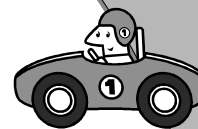


A sample "tool box":
tools with strong
properties

Summary

- ◉ Recommendations for assessment tool development
- ◉ Reference to Webpage: CEBM
 - Toolbox repository of resources

Next Steps

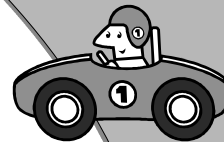


Assigned Roles:

- ◉ Andrew Hutchinson
- ◉ Dragan Ilic
- ◉ Sandra Kaplan
- ◉ Kjersti Lonning,
- ◉ Richard Niederman
- ◉ Nina Olsen
- ◉ Jarmila Potomkova,
- ◉ Sandra Zwolsman
- ◉ Julie Tilson

Next Steps

- ◎ Your feedback/comments/recommendations
- ◎ Writing Group Work
 - Google Documents
 - Skype – every 6 weeks
- ◎ Invitation for community feedback (list serve)
- ◎ Publication in conjunction with curriculum revision statement
- ◎ Supplemental resources:
 - Toolbox Website (CEBM)



Comments, suggestions,
questions, recommendations...

Julie Tilson
tilson@usc.edu